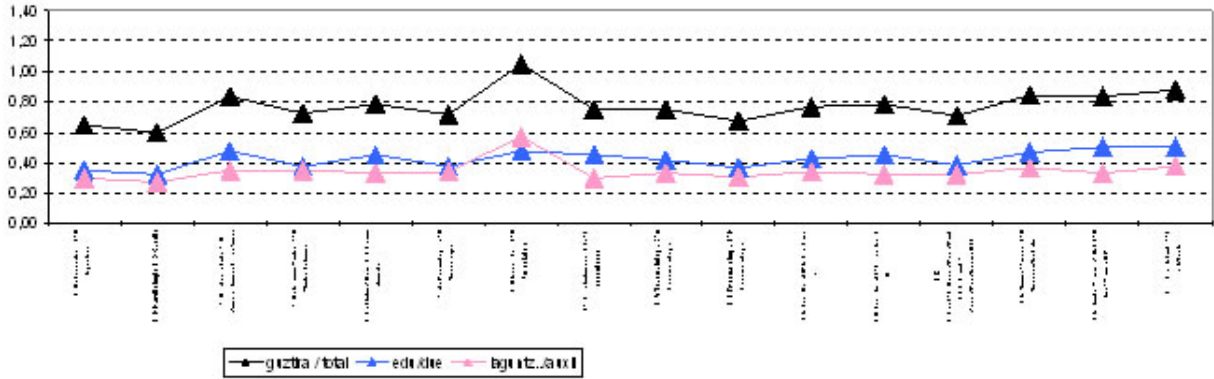


Medical - Surgical Hospitalisation



ORGANISATIONAL STRUCTURE	ESTRUCTURA ORGANIZATIVA	
Unit Supervisors	Supervisoras de Unidad	15
Registered Nurses	DUE	259
Nurse's Aides	Auxiliares enfermería	216

Medical-Surgical Hospitalisation	Hospitalización Médico-Quirúrgica	Admissions Ingresos	Stays Estancias	Nursing personnel / beds p. enf. / camas	Occup. % % Ocup.
---	--	--------------------------------------	----------------------------------	---	---

1st B - Digestive	1ª B - Digestivo	1.768	13.941	0,65	95,7%
1st D - Cardiology	1ª D - Cardiología	3.672	17.791	0,60	94,0%
2nd D - Respiratory	2ª D - Respiratorio	2.415	15.490	0,83	88,7%
2nd B - Internal Medicine	2ª B - Med. Interna	1.564	13.898	0,73	95,4%
1st E - Onco / Haemat.	1ª E - Onco / Hemat.	1.707	17.243	0,78	92,9%
2nd A - Neurology	2ª A - Neurología	1.424	11.908	0,71	93,5%
3rd D Psychiatry	3ª D Psiquiatria	595	6.822	1,05	89,2%
12th C - Infectious	12ª C - Infecciosos	897	6.556	0,75	90,1%
3rd A Trauma	3ªA Trauma	1.923	11.873	0,75	90,6%
3rd B Traumatology	3ªB Traumatología	2.540	16.343	0,67	86,3%
4th B General Surgery B	4ªB Cir. Gral. B	2.363	14.330	0,77	83,8%
4th D General Surgery A	4ªD Cir. Gral A	1.914	13.632	0,78	81,4%
4th E Card/Vasc Surg./ Rheum./Endoc.	4ªE Card/C.Vasc/Reum/ Endoc.	1.312	8.899	0,71	47,0%
1st A Neurosurg./ Rehab.	1ªA Neuroci/Rehabi.	1.451	11.830	0,84	84,5%
4th A Uro/Maxil/ENT	4ªA Uro/Maxil/ORL	1.699	7.822	0,83	89,5%
9th Plastic Surgery	9ª C. Plástica	707	4.061	0,88	69,7%

TOTAL	TOTAL	27.951	192.439	0,77	85,5%
--------------	--------------	---------------	----------------	-------------	--------------